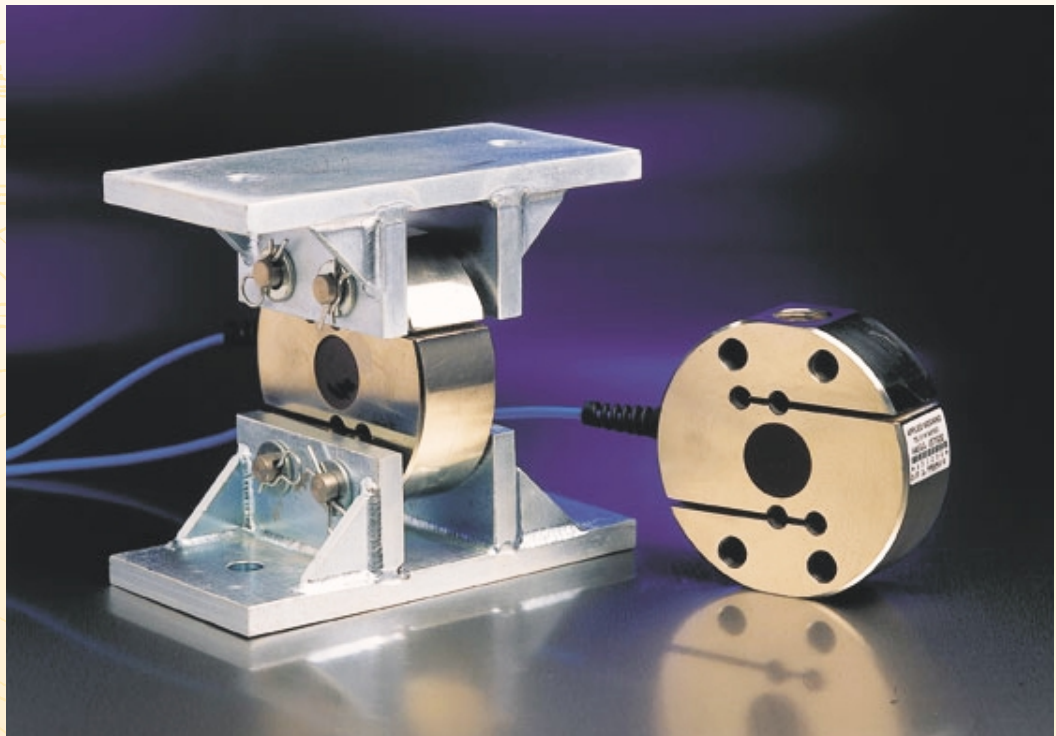


# TITAN RANGE

## MODEL 90 LOAD CELL



3-3805

717272

717273

717262-Uni

### Features

- Capacities from 1,000 kg to 7,500 kg (Tension or Compression).
- Simplified installation.
- Full sealing (IP65 Standard).
- Extremely robust.
- Five year guarantee.
- CE Approval.
- Optional - fittings for tension weighing applications.
- Optional - fully welded stainless steel version (IP68).

### Description

The **Titan Model 90** is designed for tough industrial weighing applications. It is ideally suited for weighing hoppers and tanks in tension, though combined with a loading assembly can be used for weighing in compression. The product conforms to a proven design that has been extensively used in the industrial weighing market for many years. The load cell is plated to resist corrosion and the strain gauges are fully sealed against moisture ingress. The design can be readily modified to suit customer requirements in terms of material, mounting arrangements and capacities.

# ENGINEERING SPECIFICATIONS

## THE TITAN RANGE - MODEL 90

### Specifications

Full Scale Output:	2mV/V Nom	Safe Overload:	150%
Creep (in 20 minutes):	0.03% max	Insulation Resistance:	2000 M
Nonlinearity:	0.05% max	Zero Balance:	±1%
Hysteresis:	0.03% max	Supply Voltage:	6-12 V (DC or AC)
Non-Repeatability:	0.02% max	Max Voltage:	15V
Max Operating Temp:	+73°C		
Min Operating Temp:	-10°C		

### SELECTION GUIDE BY PART NUMBER

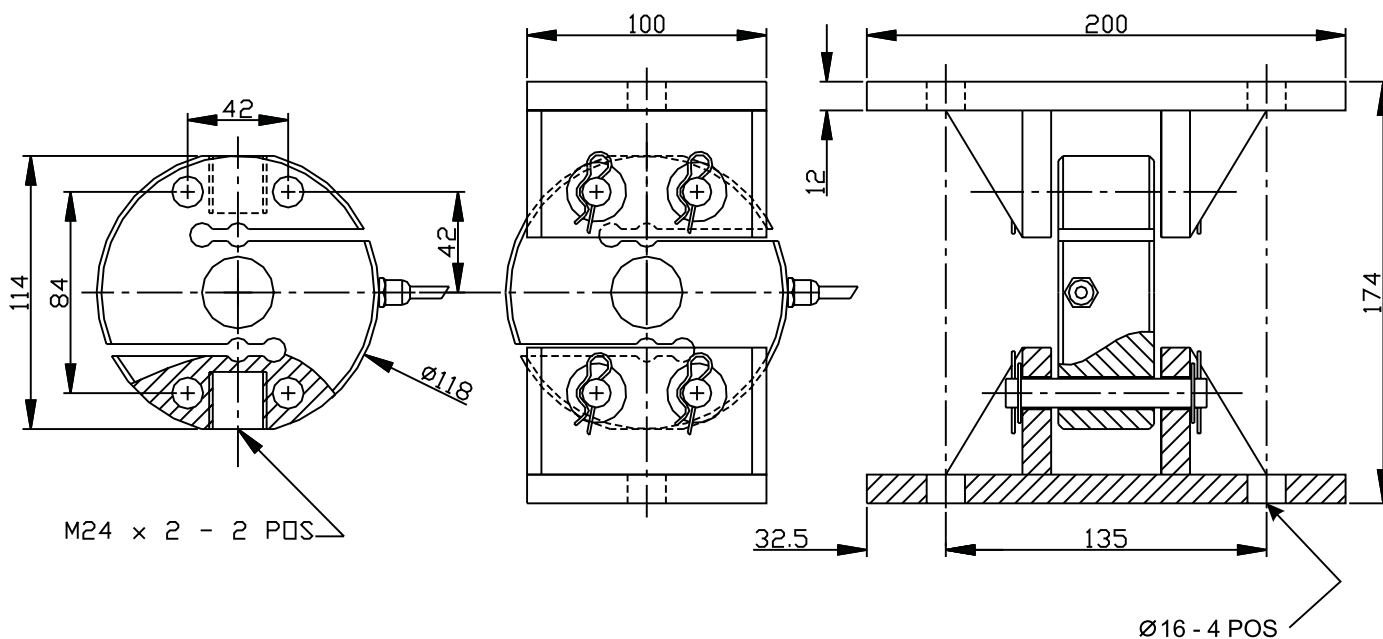
Capacity	Plated tool steel compression cell	Plated tool steel tension cell	Stainless welded compression cell	Stainless welded tension cell	Nylon coated mild steel assembly
1000 kg	AW511/01000	AW510/01000	AW516/01000	AW517/01000	} AW341/00000
2000 kg	AW511/02000	AW510/02000	AW516/02000	AW517/02000	
3500 kg	AW511/03500	AW510/03500	AW516/03500	AW517/03500	
5000 kg	AW511/05000	AW510/05000	AW516/05000	AW517/05000	
7500 kg	AW511/07500	AW510/07500	AW516/07500	AW517/07500	

#### Load cell colour code

red	+ excitation
blue	- excitation
green	+ signal
yellow	- signal

Notes CABLE: 6 METRES, 4 CORE SCREENED

All units in mm



In the interest of continued product development, Applied Weighing reserves the right to alter product specifications without prior notice. **APPLIED WEIGHING INTERNATIONAL LIMITED**, Unit 5, Southview Park, Marsack St., Caversham, Reading, England RG4 5AF

Tel: (0118) 9461900 Fax: (0118) 9461862 E-mail: sales@appliedweighing.co.uk web site: www.appliedweighing.co.uk

DS 02850 version 2.0